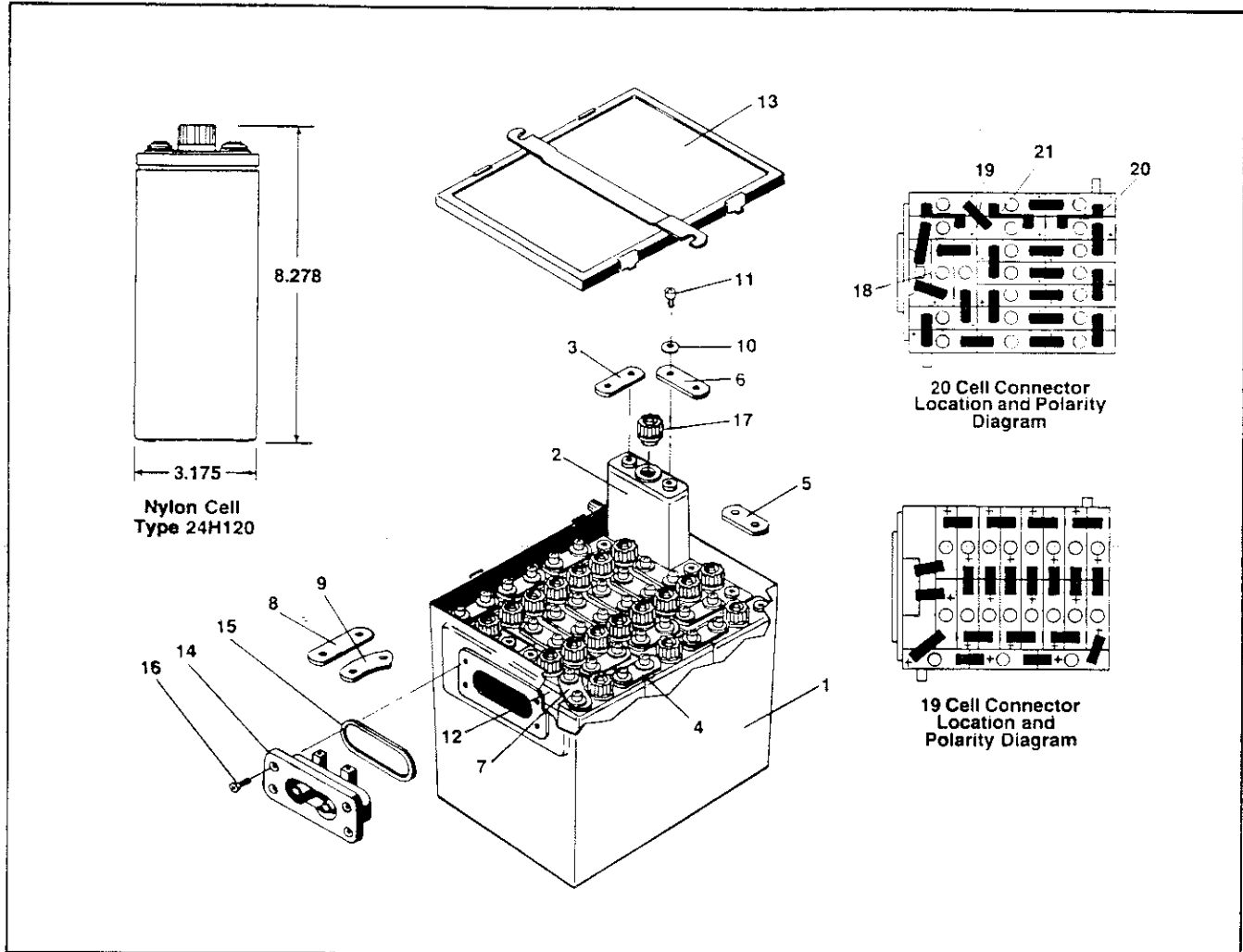


Marathon Batteries

Sintered-Plate Nickel-Cadmium Aircraft Batteries

Parts List

CA-4
CA-9
(19-20 cell conversion)



Model CA-4 and CA-9 Battery Replacement Parts

Item	Description	Part Number	Quantity	Item	Description	Part Number	Quantity
1	Can Assembly	26672-1	1	11	Socket Head Cap Screw	10488-20	40
2	Cell Assembly	24M220 (CA-4) 24H120 (CA-9)	19	12	Spacer	26674-1	1
3	Connector	16102-52	7	13	Cover Assembly	26671-1	1
4	Connector	16102-18	2	14	Receptacle Assembly	16163-3	1
5	Connector	16102-7	1	15	Rectangular Ring	24583	1
6	Connector	16102-90	7	16	Phillips Head Screw	23084-1	4
7	Connector	18006-1	1	17	Filler Cap and Vent Assembly	16934-1	19
8	Connector	24573	1	18	Spacer	28975*	1
9	Connector	24574	1	19	Connector	16102-10*	1
10	Belleville Spring	16128-1	40	20	"Z" Connector	28099-2*	1
				21	"Z" Connector	28099-3*	2

19 to 20 cell Conversion Kit - P/N 28988

*Used only on 20 cell versions



8301 IMPERIAL DRIVE • P. O. BOX 8233 • WACO, TEXAS 76710
DIVISION OF MARATHON MANUFACTURING COMPANY • HOUSTON, TEXAS 77002