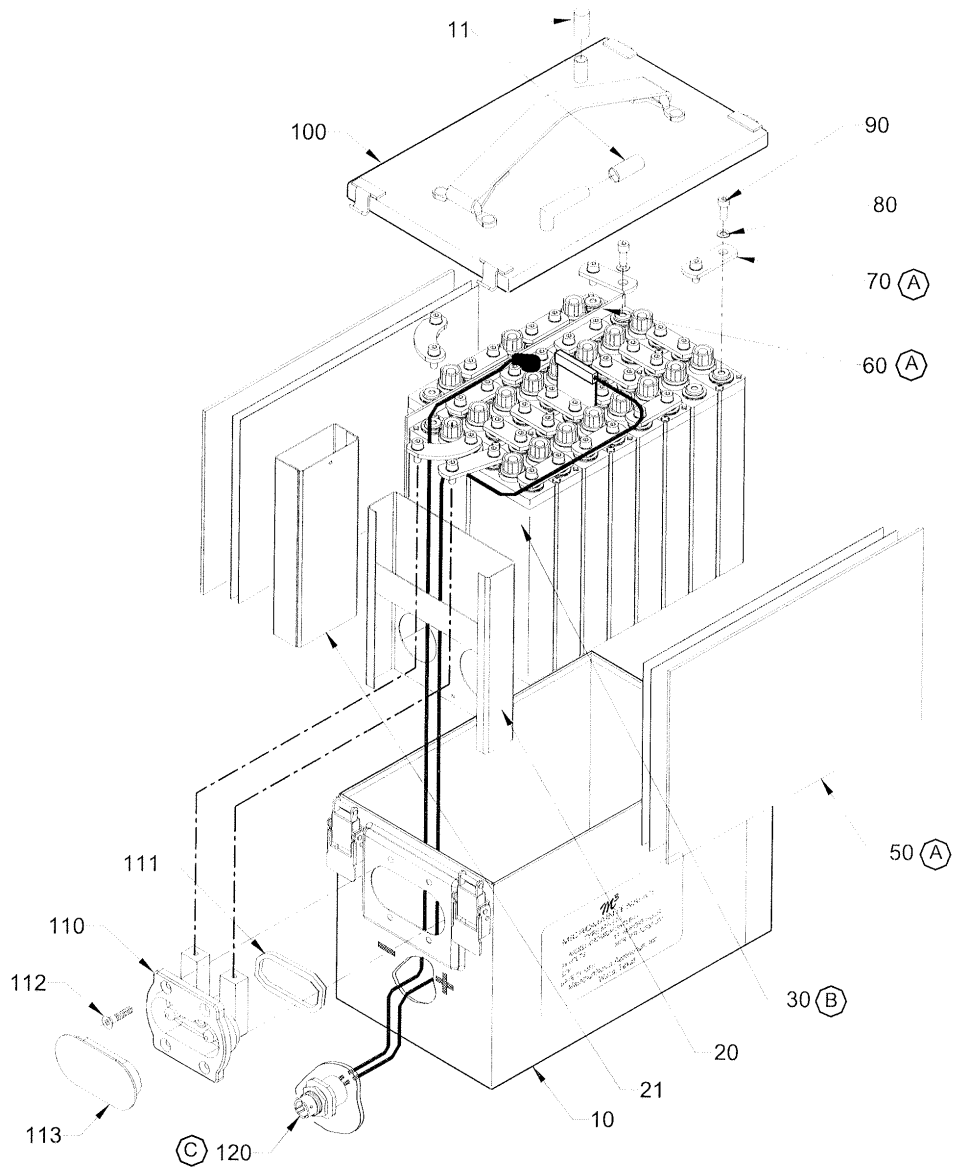
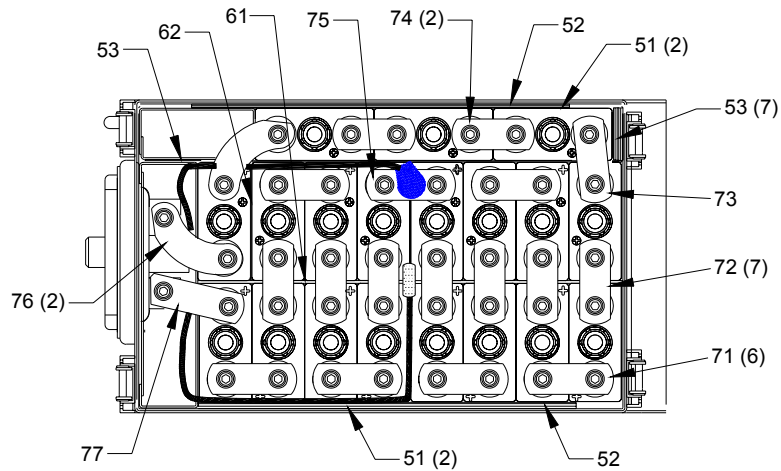


Originating DCR	55421	REVISIONS
-----------------	-------	-----------

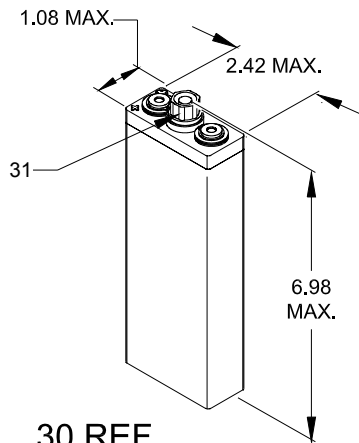
REV	DESCRIPTION	DATE	APPROVED
A	DCR 56074. CHANGED COMPANY NAME.	ATH	7-6-04 RCA



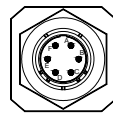
APPROVALS		DATE	MarathonNorco Aerospace, Inc. WACO, TEXAS					
ORIGINATOR A. HITTLE		04-01-02	Illustrated Parts List M ³ -17-2 P/N 32855-001					
CHECKED D. LATHAM		04-05-02						
APPROVED D. GINDER		04-05-02	SIZE	FSCM	DWG NO	IPL-1002	REV	A
			A	74025	PMA - YES		SHEET 1 OF 3	



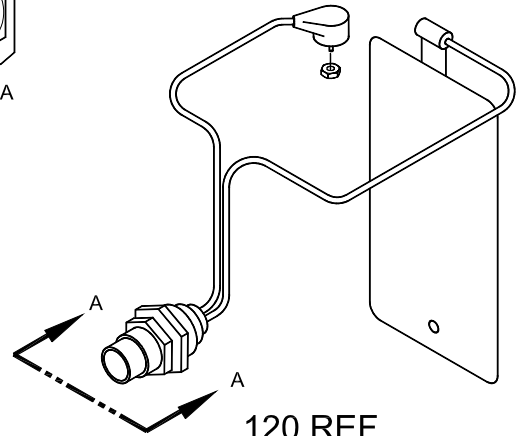
40-70 REF.
DETAIL A



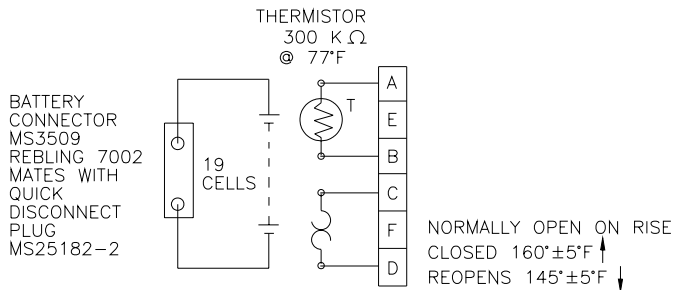
30 REF.
DETAIL B



VIEW A-A



120 REF.
DETAIL C



RECEPTACLE
MS3114E10-6P



SHCEMATIC

ILLUSTRATED PARTS LIST

Figure Item	Part Number	Nomenclature	Units Per Assy
1	32855-001	BATTERY, M ³ -17-2 19-17M ³ 100 NI-CD [32856-001]	RF
10	40553-001	CAN ASSEMBLY, MARKED	1
11	15766-002	DUST CAP – VENT TUBE (RBF)	2
20	32129-003	SPACER ASSEMBLY	1
21	27365-003	SPACER ASSEMBLY	1
30	32769-001	CELL ASSEMBLY, 17M ³ 100 [32770-001]	19
31	25529-004	FILLER CAP ASSEMBLY	19
-40		LINERS	RF
-50		SHIMS	RF
51	9988-262	SHIM, 6.5x9.75x.080	4
52	9988-165	SHIM, 6.25x9.625x.032	2
53	9988-112	SHIM, 1.0x5.625x.032	8
-60		BARRIERS	RF
61	9988-108	BARRIER, .020 NYLON	1
62	9988-120	BARRIER, .010 NYLON	1
-70		CONNECTORS	RF
71	16102-162	CONNECTOR	6
72	16102-163	CONNECTOR	7
73	16102-165	CONNECTOR	1
74	16102-164	CONNECTOR	2
75	28847-053	CONNECTOR, THERMOSTAT MTG	1
76	30452-001	CONNECTOR	2
77	16102-224	CONNECTOR	1
80	16128-028	BELLEVILLE WASHER	40
90	10488-020	SCREW, SOCKET HD. CAP #10-32	40
100	40555-003	COVER ASSEMBLY, MARKED	1
110	27904-004	RECEPTACLE ASSEMBLY	1
111	24583-001	RING, RECTANGULAR	1
112	23084-001	SCREW, FLAT HD. SEMS. 8-32x3/8	4
113	26916-006	DUST CAP – MAIN ELECTRICAL (RBF)	1
120	32140-001	TEMPERATURE PROBE ASSEMBLY	1

RBF – REMOVE BEFORE FLIGHT