

SERVICE BULLETIN

SUBJECT: Norco, Inc. Strut Assembly A2956-5 rework to
A2956-5A. Strut Assembly A2956-4 rework to A2956-5A.

1. PLANNING INFORMATION

A. Effectivity

The unit effectivity of this bulletin is NV001 to NV064.

B. Reason

Required for BMAC custom rework information.

C. Description

This service bulletin provides a detailed description for incorporating this design change. This change applies to strut assembly A2956-4 and A2956-5. Rework is identical except as noted.

D. Manpower

Required to accomplish rework 2.5 hrs.

E. Material Availability

No additional parts or materials are required to accomplish this rework.

F. Weight

No significant weight change.

2. ACCOMPLISHMENT INSTRUCTIONS

A. Strut Assembly A2956-4

Strut Assembly A2956-4 may or may not have a safety pin assembly as shown in Figure 3. If the strut has a safety pin assembly, it will be necessary to relocate it as described in rework instructions, step No. 6. If the strut does not have a safety pin assembly, it will be necessary to obtain a service bulletin and safety pin assembly from Boeing.

A2956-78-1

PAGE 1 OF 7



SERVICE BULLETIN

B. Rework Instructions (See Figure 1)

1. Pull back on release collar (AM2956-1-3) to unlock strut and clamp the end of the body lock (AM2956-1-4) in a vise with soft semicircular jaws.
2. Apply heat to the outer tube (AM2956-4-1) adjacent to the collar for a distance of 2 inches using a heat gun. This will soften the thread retaining compound of the body lock.
3. Unscrew the outer tube from the body lock using a strap type wrench.
4. Remove the retaining ring (35S1250-01) from the inner tube (AM2956-4-2). Remove inner tube from body lock and collar. Locking dogs will fall out of collar. Save dogs for reinstallation per Figure 4.
5. Place inner tube in lathe and machine two grooves as shown in Figure 2. Spray machined grooves with dry film lubricant, per MIL-L-8937D.
6. Drill hole through outer tube as shown in Figure 3 and relocate safety pin assembly.
7. Hold release collar back and install locking dogs as shown in Figure 4. Orientation of locking dogs is critical to function of hold open rod.
8. Slide collar/body lock assembly over end of inner tube. Check collar for proper lock-up. Reinstall retaining ring on inner tube.
9. Clamp end of body lock in vise with soft semicircular jaws.
10. Apply Loctite #680 to threads of body lock. Screw outer tube onto body lock using a strap type wrench.

A2956-78-1

PAGE 2 OF 7



SERVICE BULLETIN

D. Reidentify

1. After incorporation of this service bulletin, A (-5A) should be added to the existing part number to indicate the incorporation of this service bulletin.

Example of modified part number:

A2956-5-5A

or

A2956-4-5A

A2956-78-1

PAGE 3 OF 7

SERVICE BULLETIN

NORCO, INC.

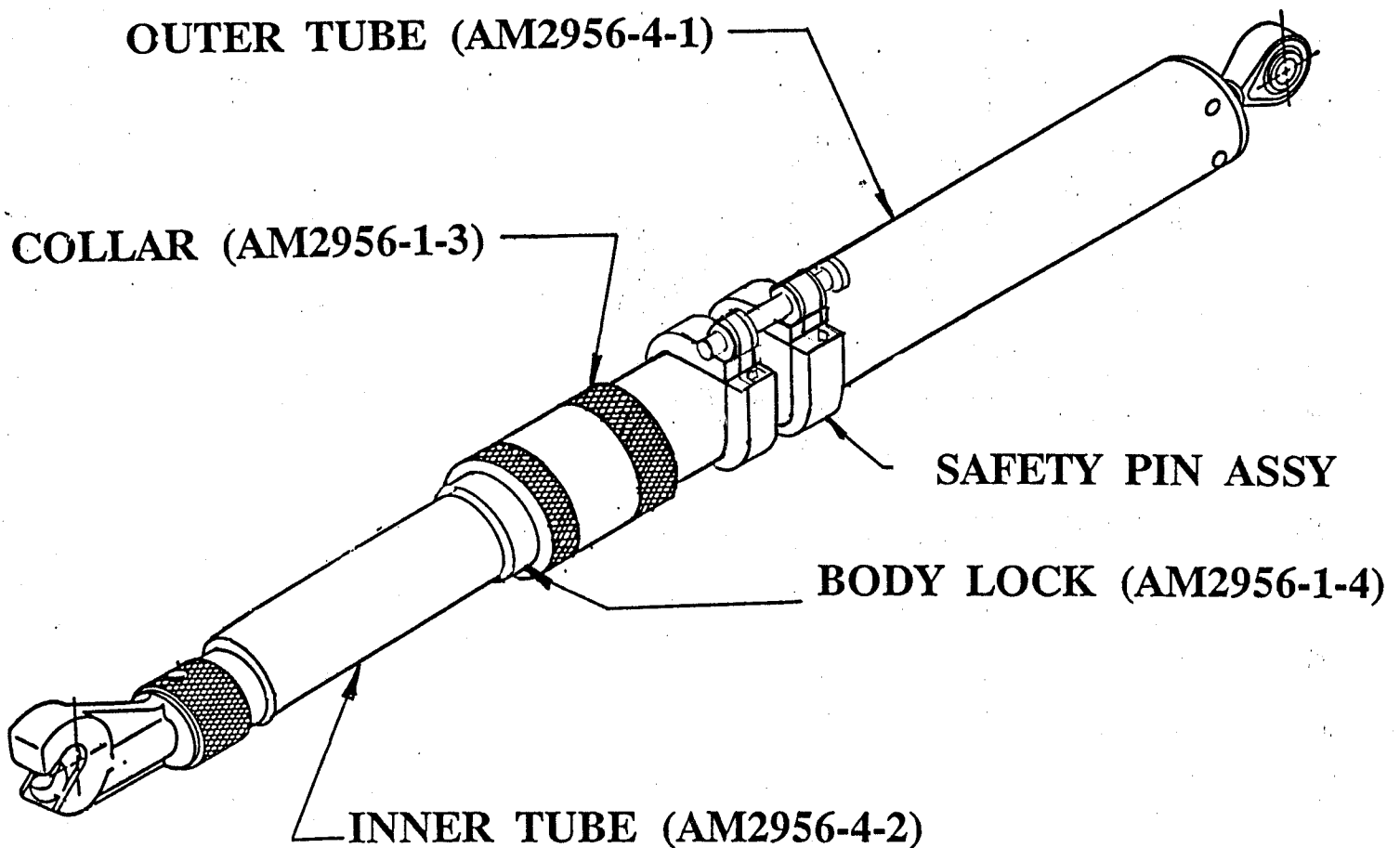


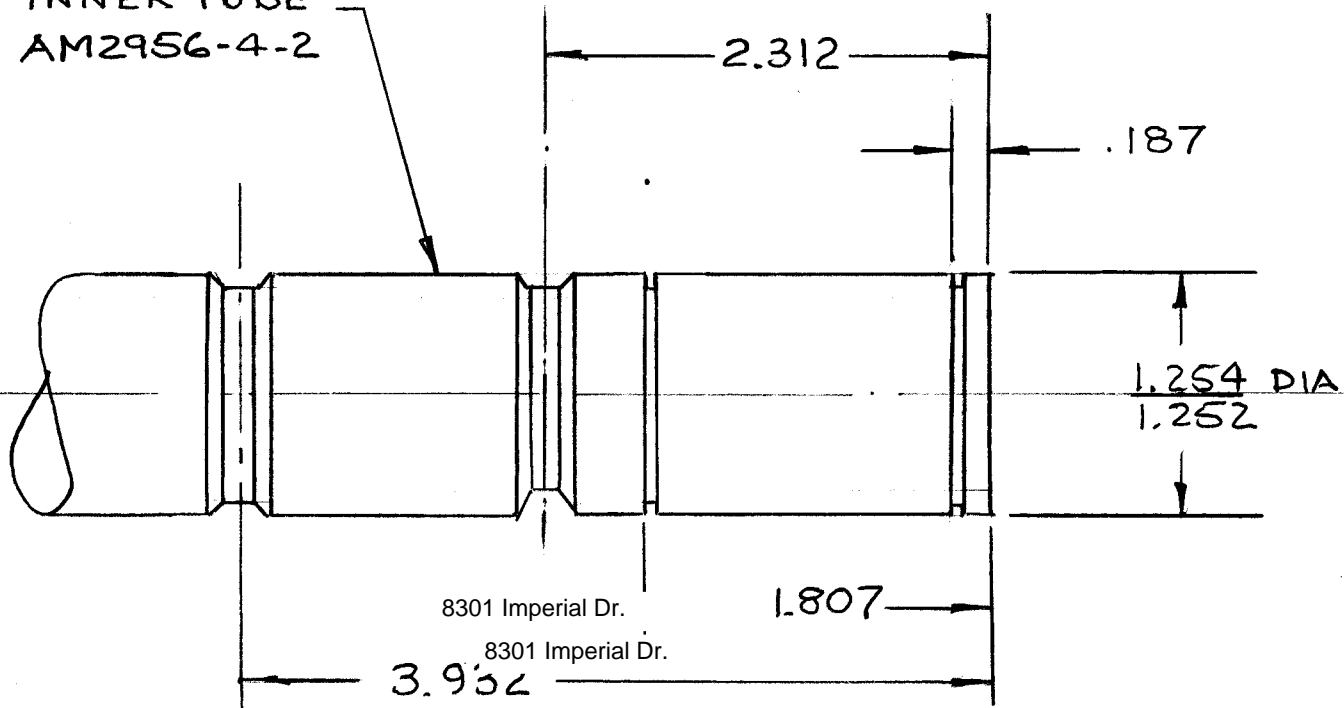
FIGURE 1 - STRUT ASSEMBLY A2956-5A

A2956-78-1

SERVICE BULLETIN

INNER TUBE
AM2956-4-2

OLD GROOVE LOCATIONS



NEW GROOVE LOCATIONS

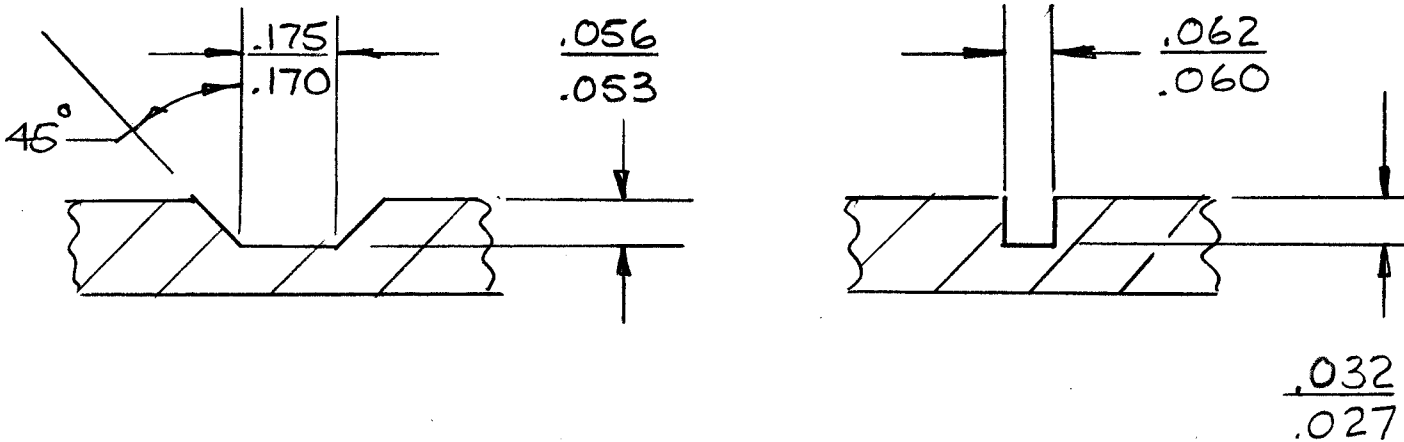


FIG. 2 NEW GROOVE DIMENSIONS

A2956-78-1

SERVICE BULLETIN

NORCO, INC.

.250-.254 DIA. HOLES TO BE ON COMMON CENTERLINE AND DRILLED PERPENDICULAR TO ROD TUBE. DEBURR INSIDE AND OUTSIDE OF HOLE.

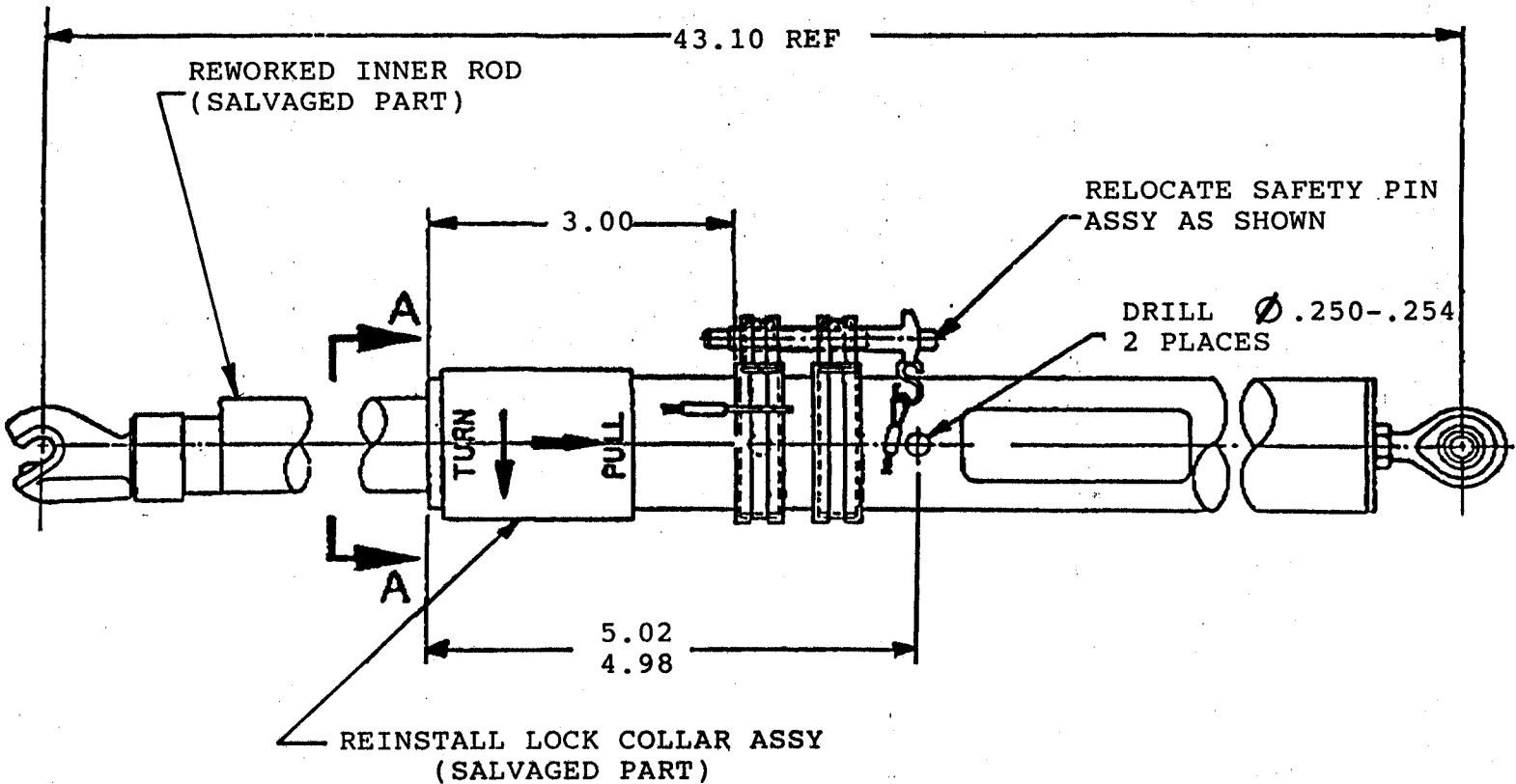
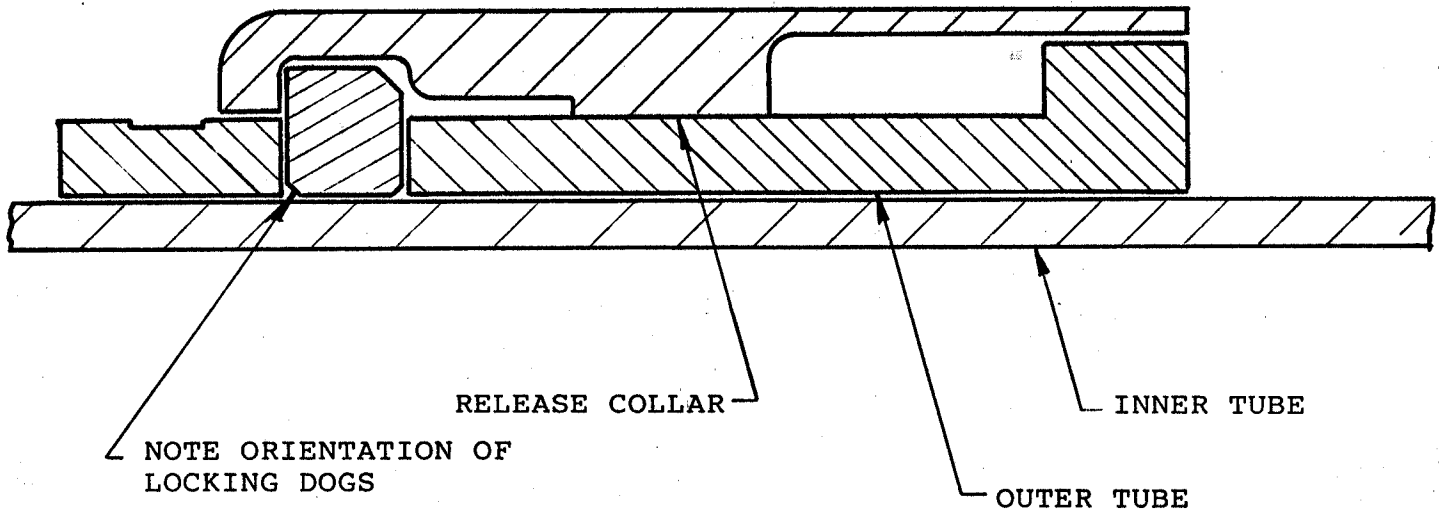


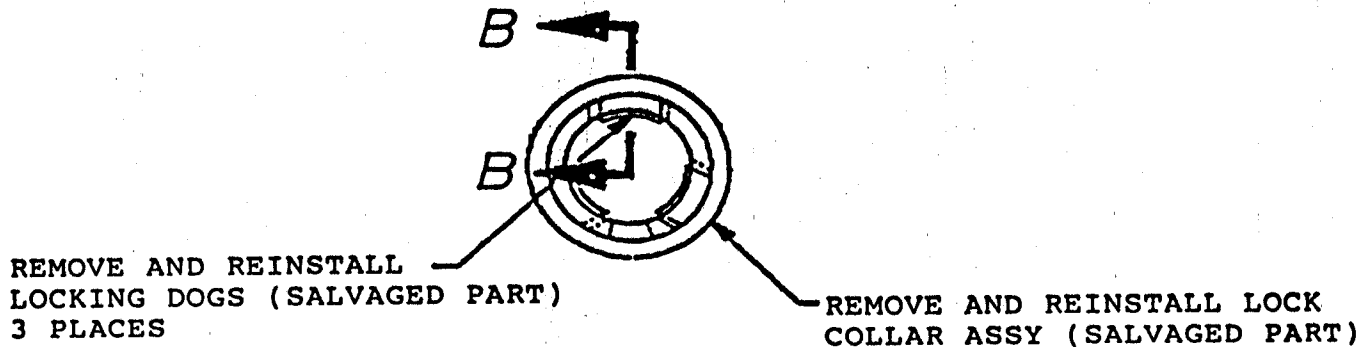
FIGURE 3 - STRUT ASSEMBLY A2956-5A

A2956-78-1

SERVICE BULLETIN NORCO, INC.



SECTION B-B



SECTION A A

FIGURE 4 - REINSTALLING LOCKING COLLAR DOGS

A2956-78-1